



Monthly Report on COVID19 Outbreaks in Nursing Homes and Community Hospitals



Health Protection Surveillance Centre 02/04/2024

HE Dates to note

- Week 10 2020 (01/03/2020 to 07/03/2020): The beginning of the pandemic in Ireland
- Week 40 2022 (02/10/2022 to 08/10/2022) to week 20 2023 (14/05/2023 to 20/05/2023): The 2022/2023 winter respiratory season in Ireland
- Week 40 2023 (01/10/2023 to 07/10/2023) : The beginning of the 2023/2024 winter respiratory season in Ireland
- Week 13 2024 (23/03/2024 to 30/03/2024)

Note: The epidemiological weeks in this report run from Sunday to Saturday, please refer to the surveillance resources on the HPSC website for a complete list of epidemiological weeks with start and end dates. <https://www.hpsc.ie/notifiablediseases/resources/epidemiologicalweeks/>

- The following report provides information on COVID-19 outbreaks/clusters notified on CIDR to midnight 30/03/2024 (week 13) and extracted from CIDR on 02/04/2024.
- These data are provisional and subject to ongoing review, validation and update. As a result, data reported may not match data previously reported or outbreaks data reported in the future for the same time period. Furthermore, the number of linked cases is based on the number of linked cases at the time of extraction from CIDR and an outbreak may increase in size since the time of extraction due to more cases occurring or more information becoming available on CIDR.
- Sincere thanks are extended to all those who are participating in the collection of data and reporting of data used in this report, particularly under the current challenging circumstances. This includes the HSE COVID-19 Contact Management Programme (CMP), staff in ICU units, notifying clinicians, laboratory staff, Public Health doctors, Nurses, Surveillance Scientists, Epidemiologists, Microbiologists and Administrative staff.

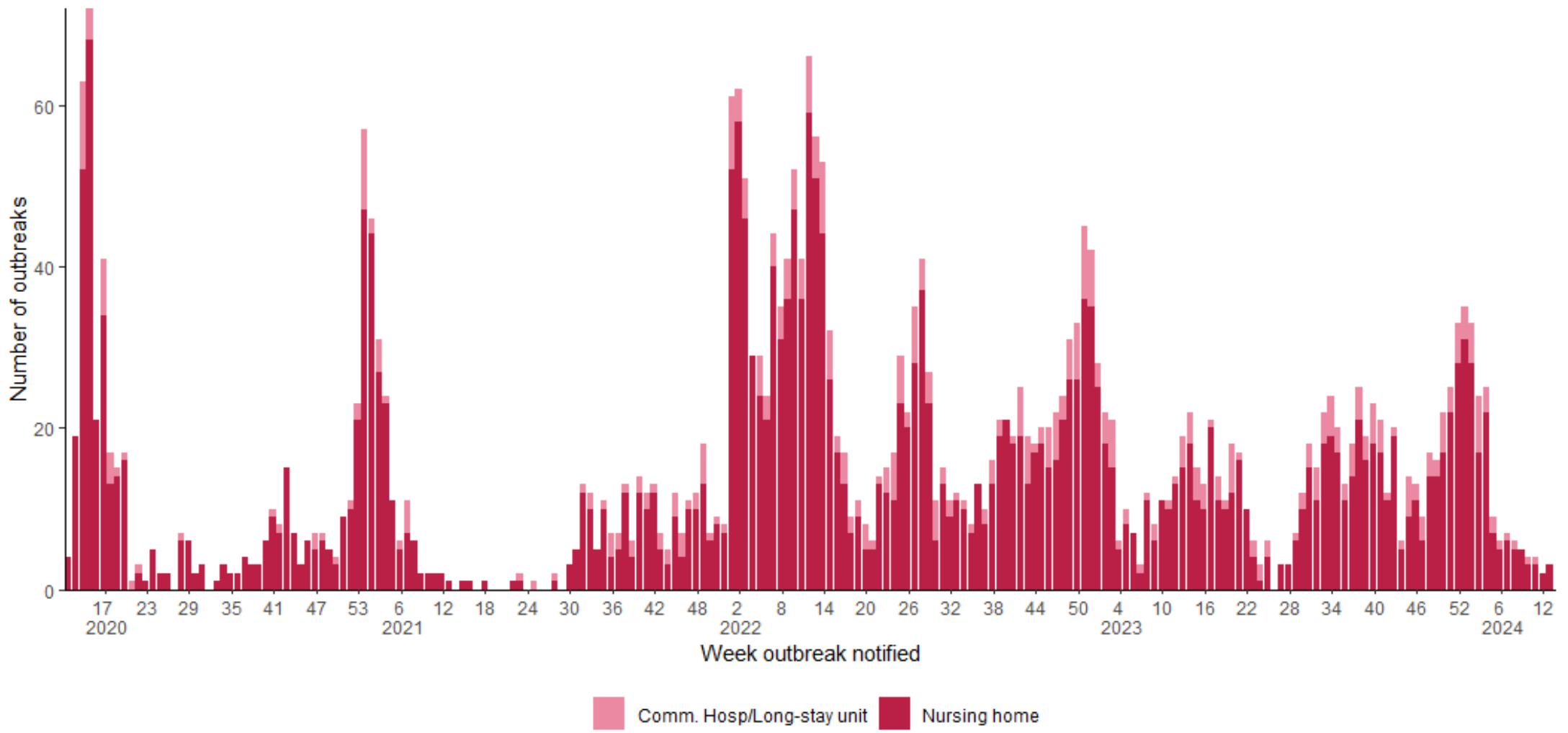
COVID-19 Outbreaks in Nursing Homes and Community Hospitals, week 10 2020 to week 13, 2024

Year	Number of Outbreaks	Number of Cases*	Number of Deaths**
2020	440	11,374	1,469
2021	427	9,771	1,054
2022	1,413	23,627	520
2023	758	7,783	63
2024	163	1,680	13
Total	3,201	54,235	3,119

*the larger among number ill, the aggregate number of confirmed cases reported and the number of confirmed linked cases. From 2022, includes cases confirmed by PCR or Antigen testing

**the larger between the aggregate number of outbreak deaths reported and the number of linked cases (confirmed and probable) who died

Weekly number of COVID-19 outbreaks in Nursing Homes and Community Hospitals, week 10 2020 to week 13, 2024



Note: Numbers of associated cases are based on the larger among number ill, the aggregate number of confirmed cases reported and the number of confirmed linked cases.



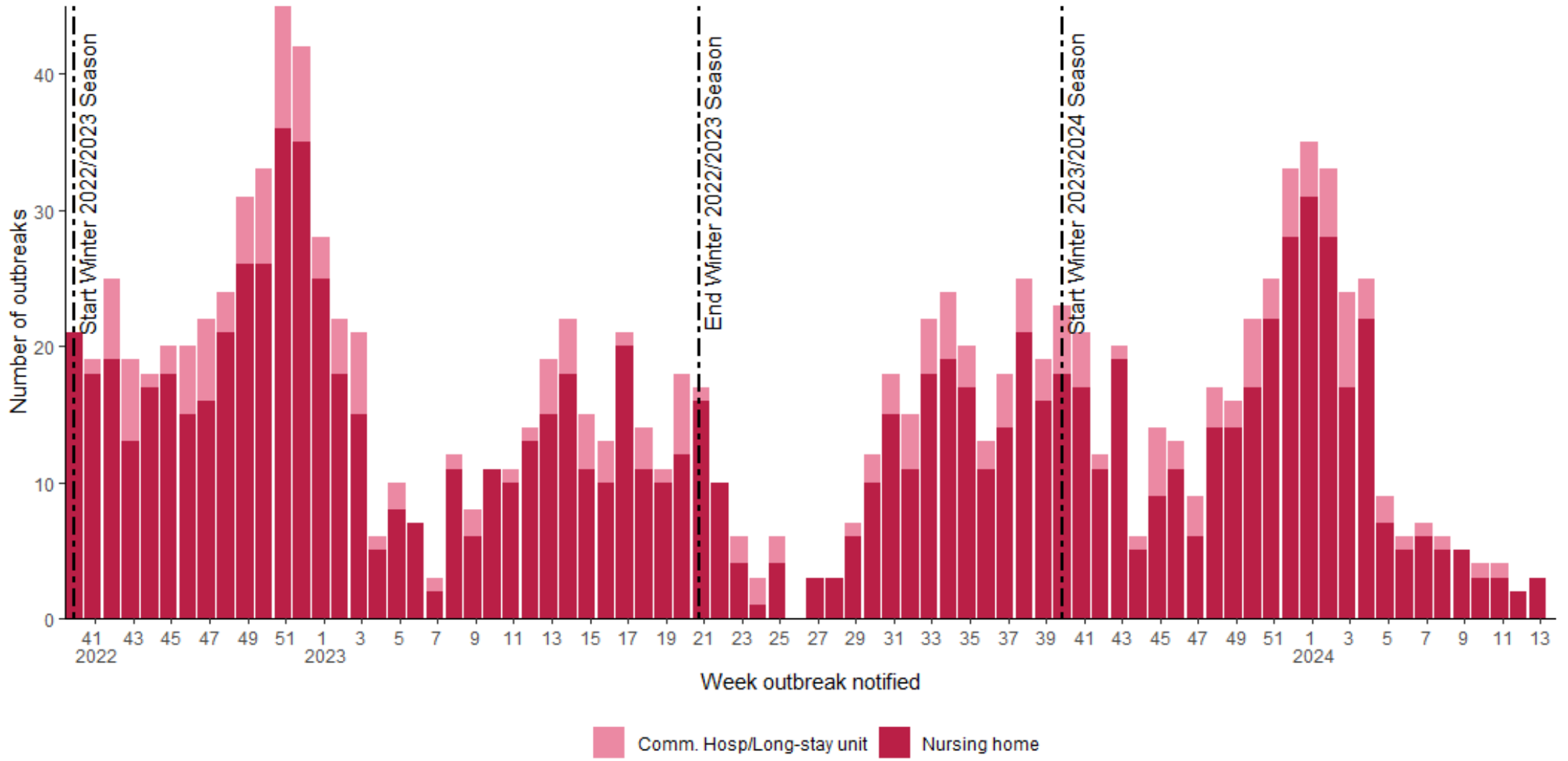
COVID-19 outbreaks in Nursing Homes and Community Hospitals, 2022/2023 winter season and 2023/2024 winter season to date

Year	Number of Outbreaks	Number of Cases*	Number of Deaths**
2022/2023 winter season	625	7,257	99
2023/2024 winter season to date	394	4,037	33
Total	1,019	11,294	132

*the larger among number ill, the aggregate number of confirmed cases reported and the number of confirmed linked cases. From 2022, includes cases confirmed by PCR or Antigen testing

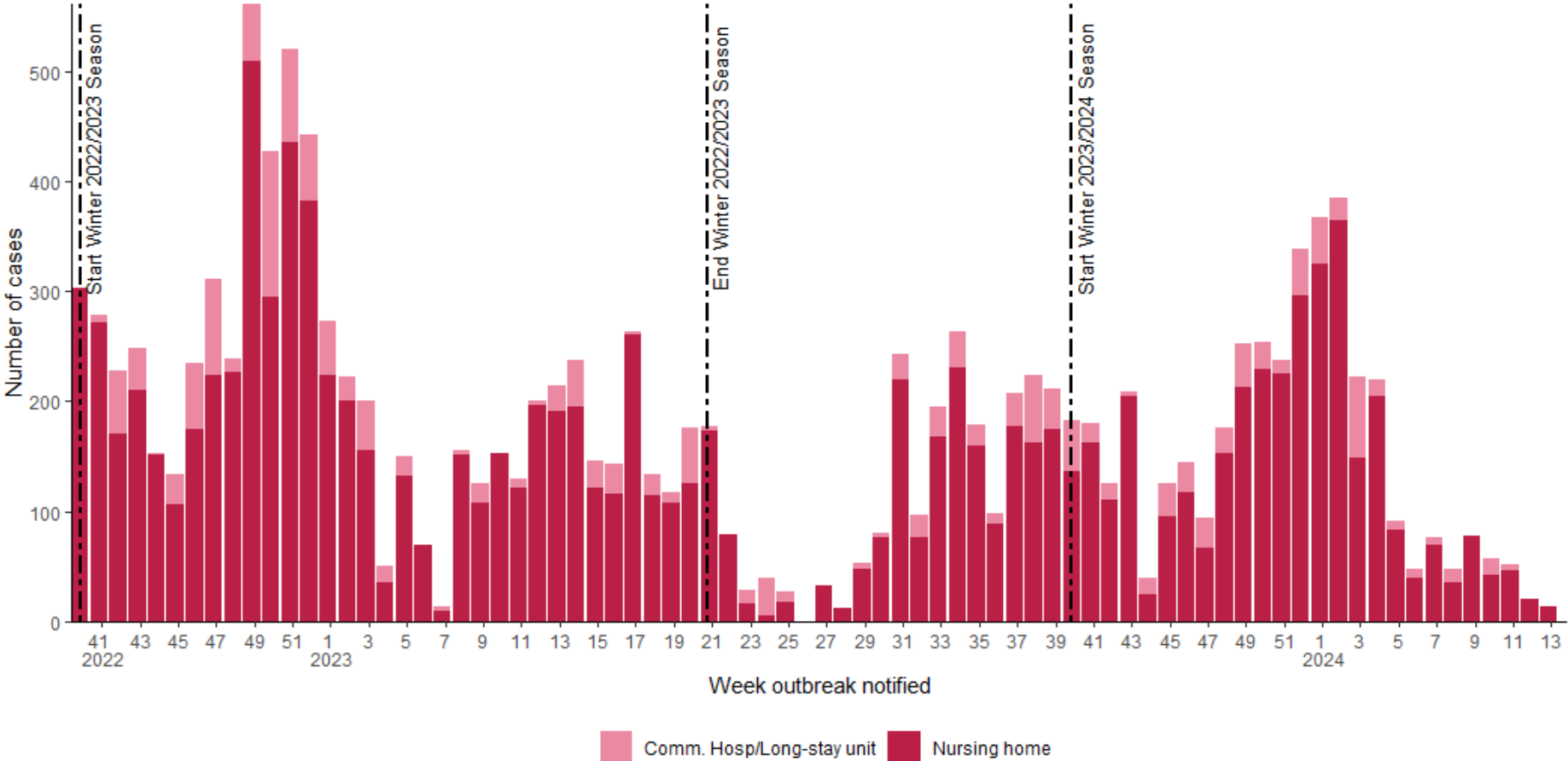
**the larger between the aggregate number of outbreak deaths reported and the number of linked cases (confirmed and probable) who died

Weekly number of COVID-19 outbreaks in Nursing Homes and Community Hospitals, week 40 2022 to end week 13, 2024





Cases associated with COVID-19 outbreaks in Nursing Homes and Community Hospitals, week 40 2022 to end week 13, 2024

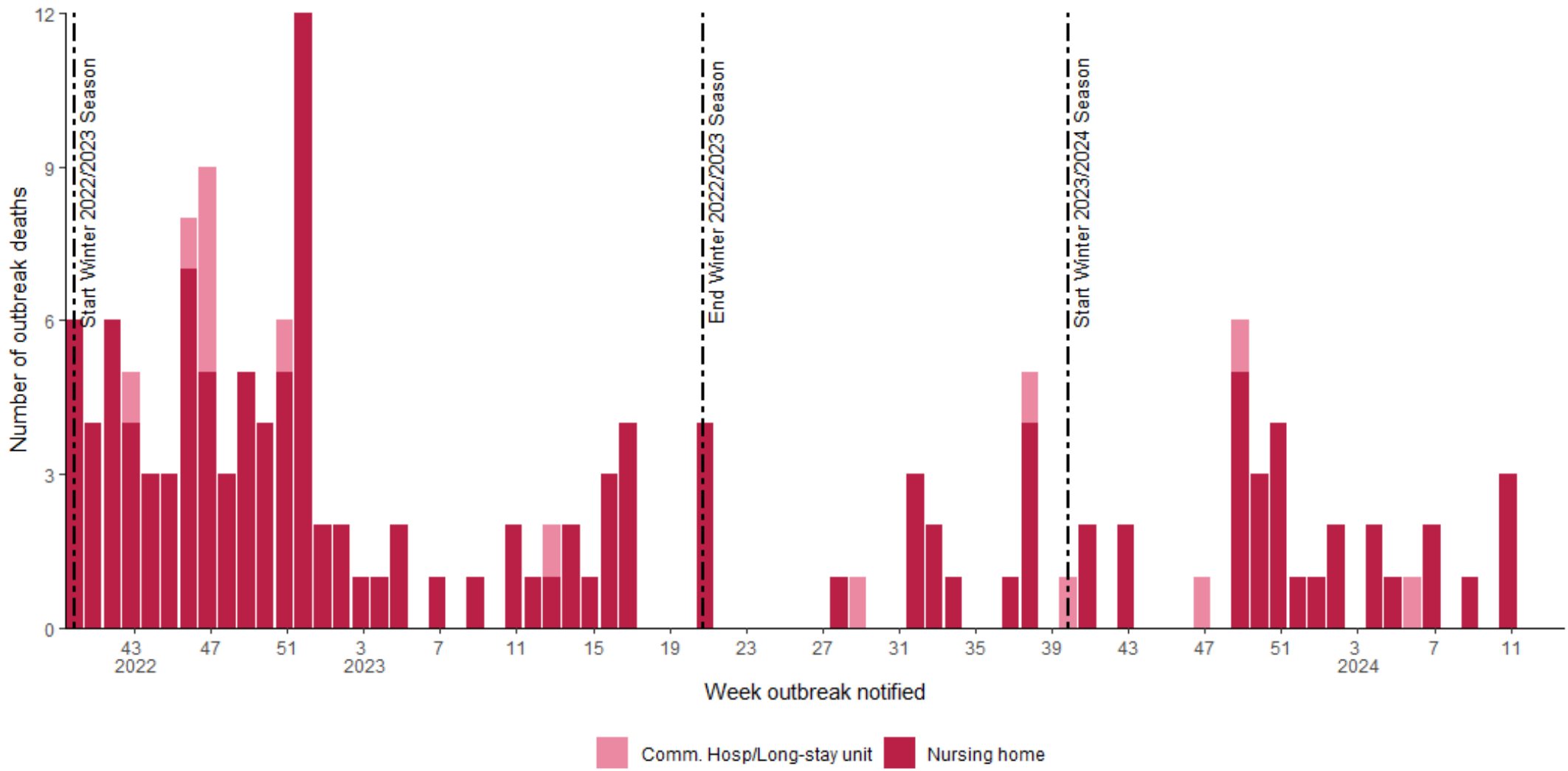


- For outbreaks reported in week 13 2024, the number of outbreak associated cases was 14
- The peak in weekly case numbers in the winter 2022/2023 season was in outbreaks reported in week 49 2022 with 561 cases





Deaths associated with COVID-19 outbreaks in Nursing Homes and Community Hospitals by week of outbreak notification, week 40 2022 to end week 13, 2024



To date in the 2023/2024 winter season there has been 33 deaths associated with outbreaks in these settings



Burden of disease associated with COVID-19 outbreaks in Nursing Homes and Community Hospitals, week 40 2023 to end week 13, 2024

Outbreak Location	Number of Outbreaks	Number of Cases*	Number of Deaths**
Comm. Hosp/Long-stay unit	66	530	4
Nursing home	328	3,507	29
Total	394	4,037	33

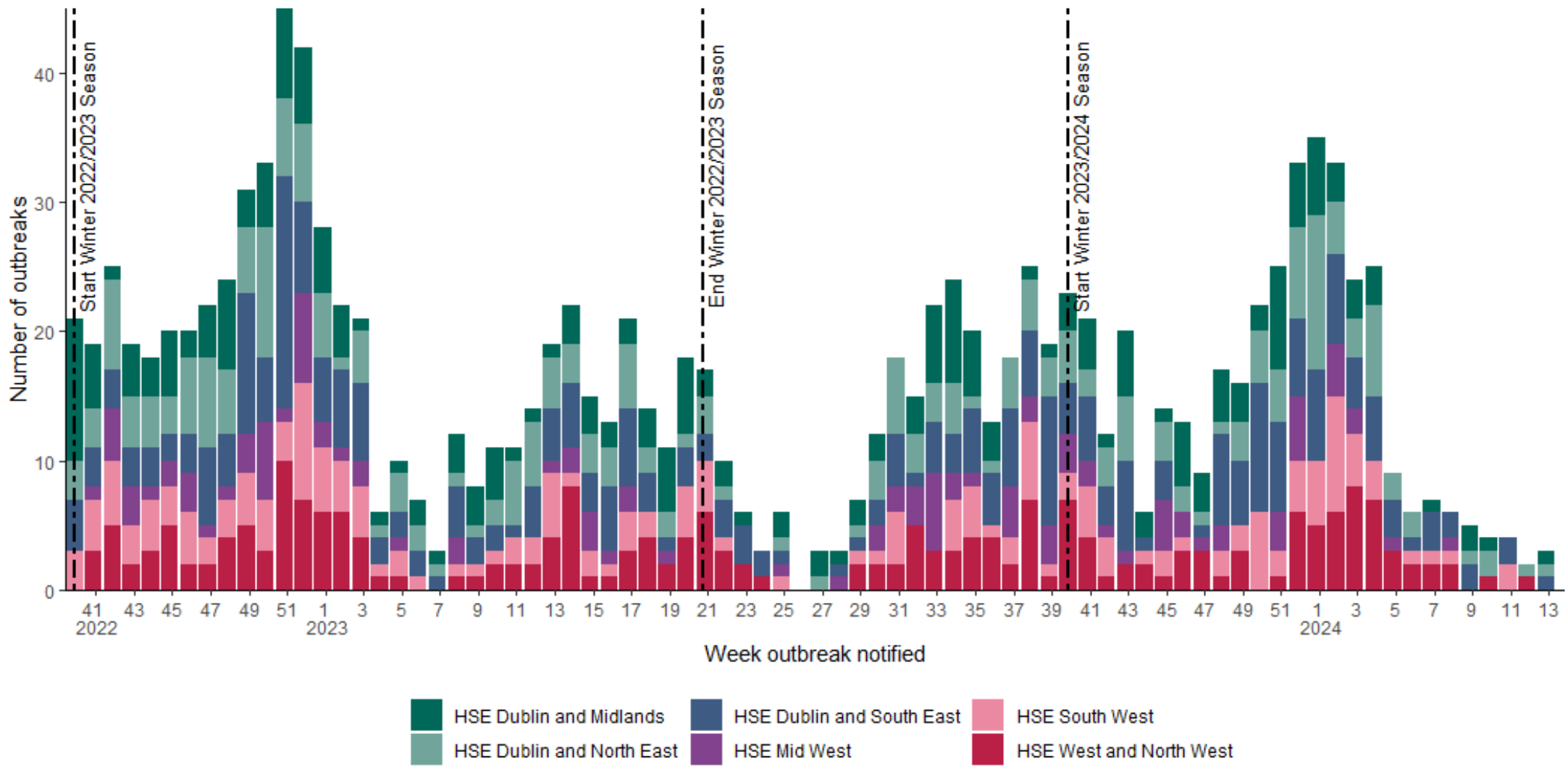
*the larger among number ill, the aggregate number of confirmed cases reported and the number of confirmed linked cases. From 2022, includes cases confirmed by PCR or Antigen testing

**the larger between the aggregate number of outbreak deaths reported and the number of linked cases (confirmed and probable) who died

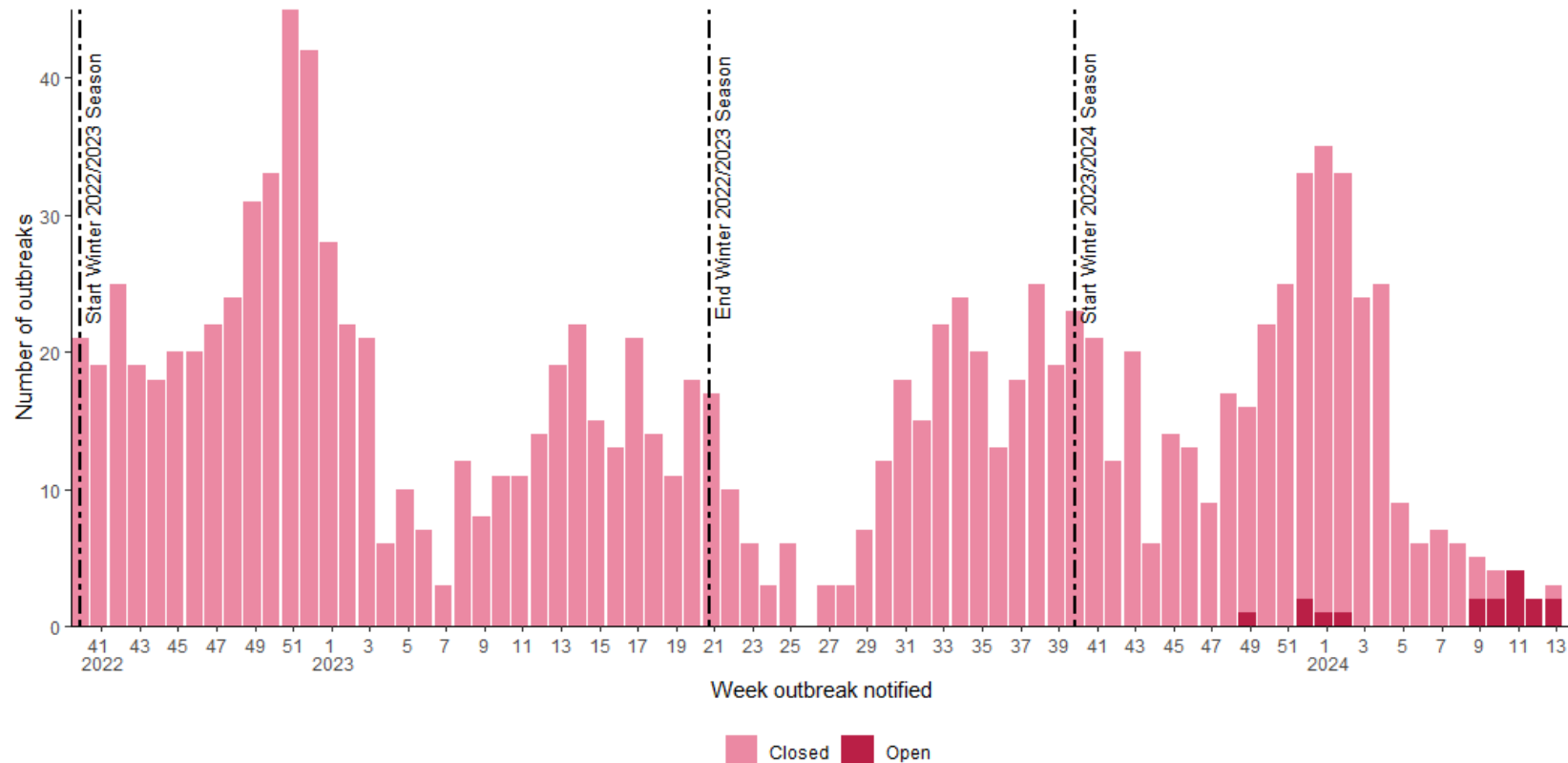
Week 40 2023 to week 13, 2024

- There have been 394 outbreaks reported in the current winter season to date
- 4037 cases associated with these outbreaks were reported
- There were 33 outbreak associated deaths among the 4037 cases reported (0.82%)

HSE Regional distribution of outbreaks in Nursing Home and Community Hospitals, week 40 2022 to end week 13, 2024



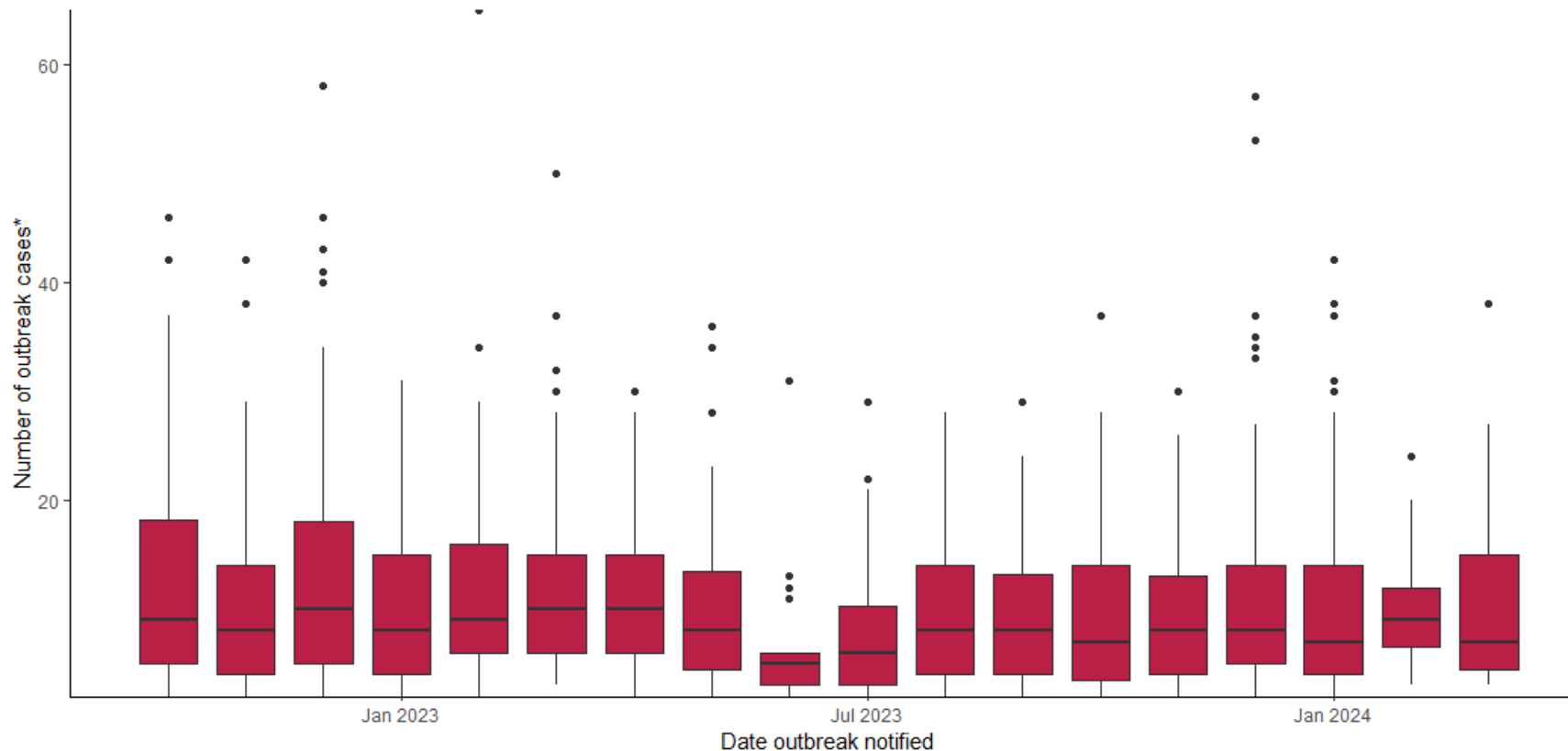
Open and closed outbreaks by week in Nursing Home and Community Hospitals, week 40 2022 to end week 13, 2024



- On CIDR, 22 outbreaks are reported as being still open in these settings
- Since week 40 2023, 312 outbreaks in Nursing Homes have been closed. The average duration of these outbreaks (169/312, 54.2%)* was 25 days.
- Since week 40 2023, 65 outbreaks in Community Hospitals have been closed. The average duration of these outbreaks (34/65, 52.3%)* was 22 days.

*Average outbreak duration is calculated according to the number of days between the onset dates for the first and last cases (where these dates are reported) and 14 days following the onset date of the last case

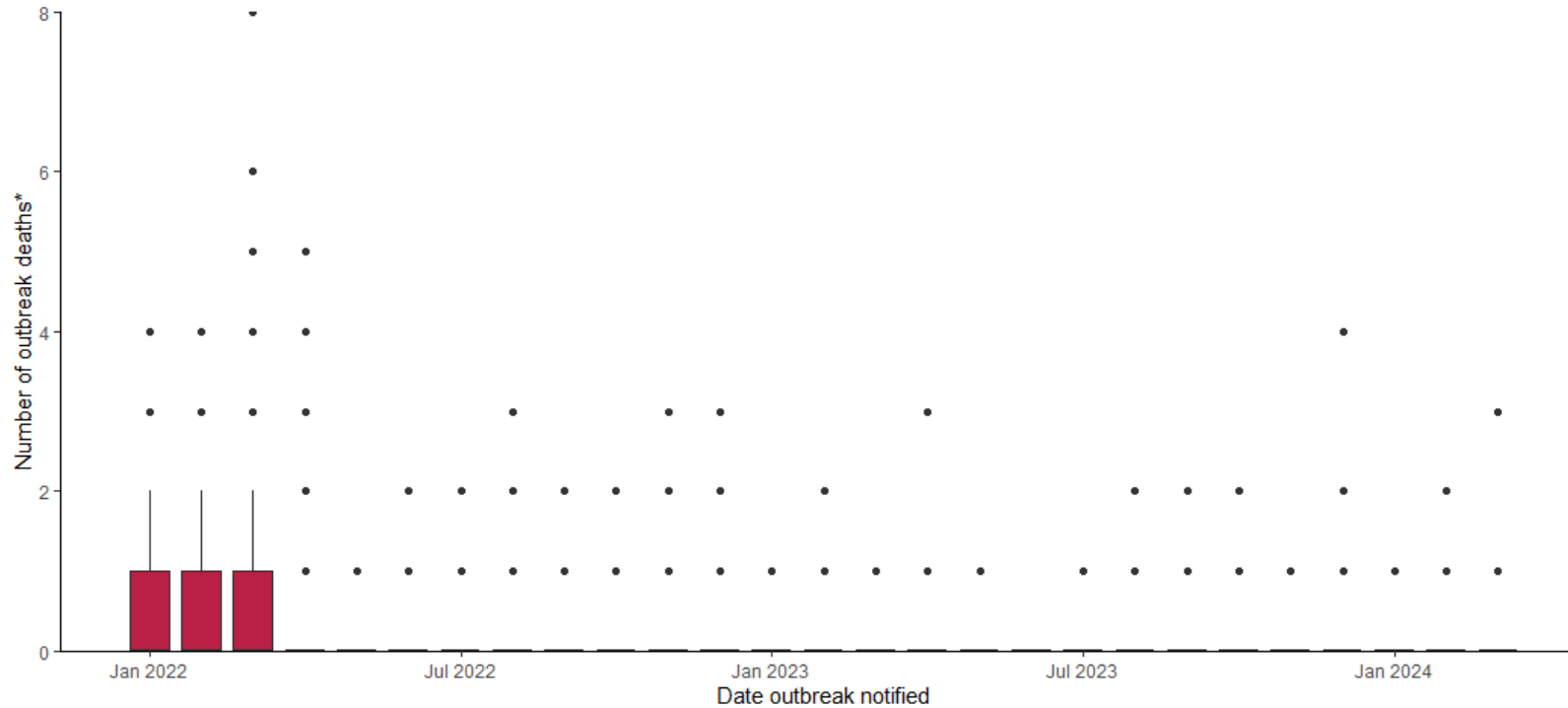
HE Distribution of outbreak size* by month of outbreak notification



*Outbreak size is based on the larger among number ill, the aggregate number of confirmed cases reported and the number of confirmed linked cases

- The median outbreak size has remained relatively low since the vaccination programme commenced in January/February 2021
- The median outbreak size for outbreaks reported in March 2022 increased to 21, reduced to 7 in March 2024

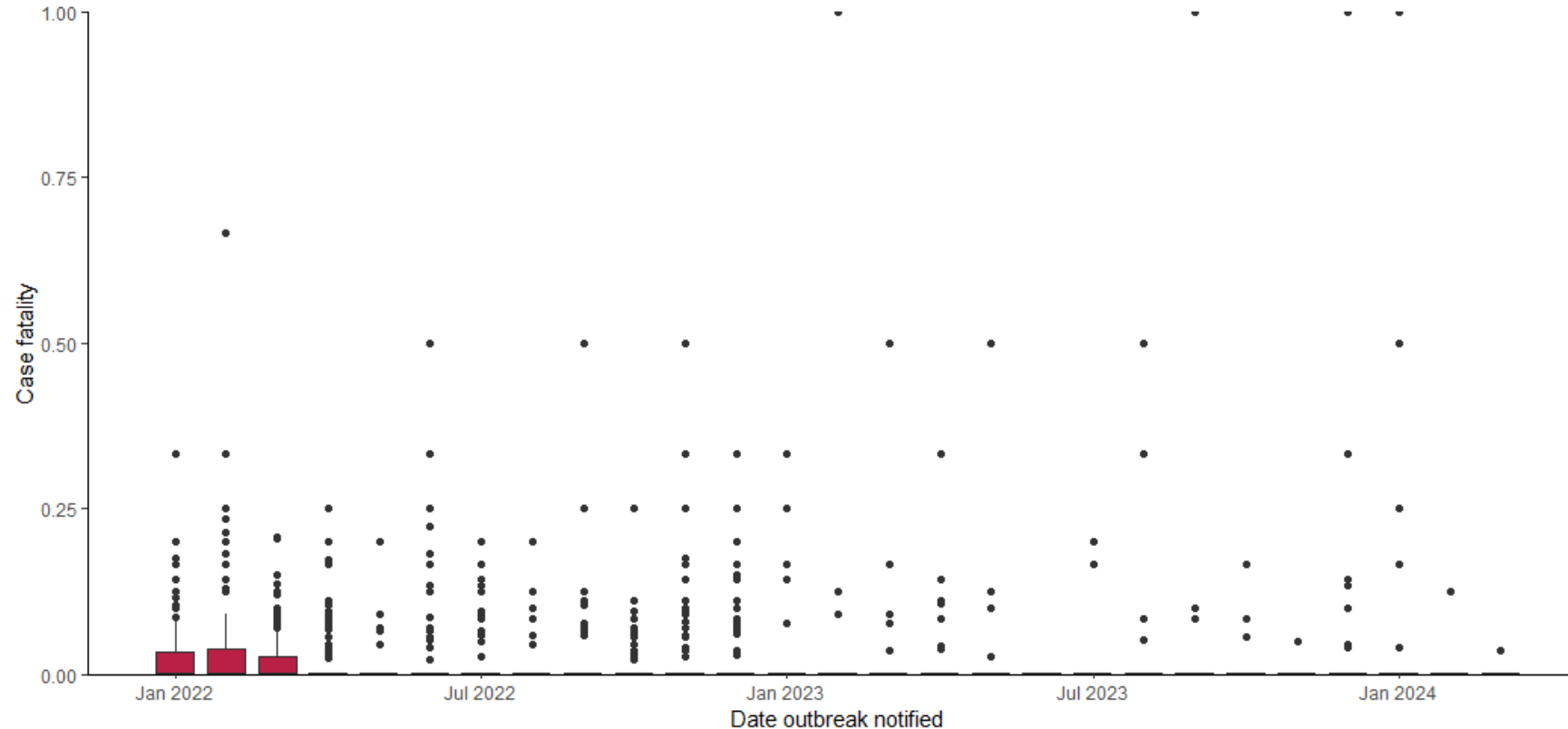
HE Distribution of number of associated deaths* per outbreak by month of outbreak notification



*Number of associated deaths is based on the larger between the aggregate number of deaths reported and the number of linked cases who died (confirmed and probable).
Only outbreaks with cased information (aggregate or disaggregate) are included in this calculation

- The median number of deaths per outbreak has remained relatively low since the vaccination programme commenced in January/February 2021
- The monthly median number of deaths per outbreak has remained at zero since November 2021
- Note: Later outbreaks in the series may still be accruing cases and deaths

HE Distribution of outbreak case fatality* by month of outbreak notification



*Case fatality is calculated as the number of associated deaths (slide 14) as a percentage of the outbreak size (defined slide 13). Only outbreaks with case information (aggregate or disaggregate) are included in this calculation

- The median outbreak case fatality has remained relatively low since the vaccination programme commenced in January/February 2021
- The monthly median outbreak case fatality has remained at zero since November 2021
- Note: Later outbreaks in the series may still be accruing cases and deaths